

NOTES

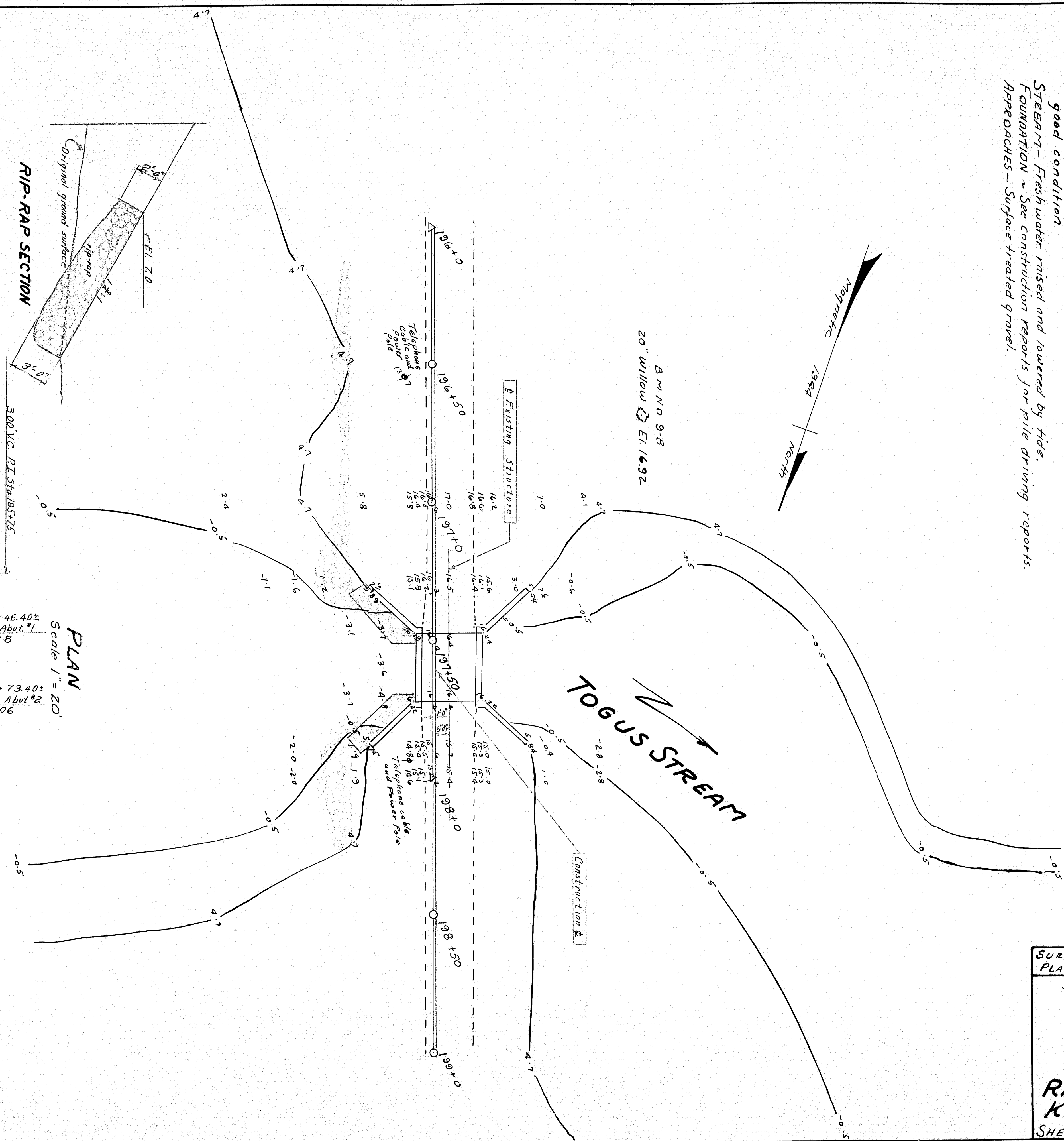
EXISTING SUPERSTRUCTURE - Concrete T Beam. Gravel wearing surface. All good condition.

EXISTING SUBSTRUCTURE - Moss concrete abutments on pile foundation. Abut #1 good condition. Abut #2 has vertical crack near center of breast wall. Also construction joints are open near end of each wing of Abut #2. Concrete good condition.

STREAM - Freshwater raised and lowered by tide.

FOUNDATION - See construction reports for pile driving reports.

APPROACHES - Surface treated gravel.



RIP-RAP SECTION

PLAN
Scale 1" = 20'

20	196+50	197+00	197+50	198+00	198+50
15					
10					
5					
0					
-5					
-10					
-15					

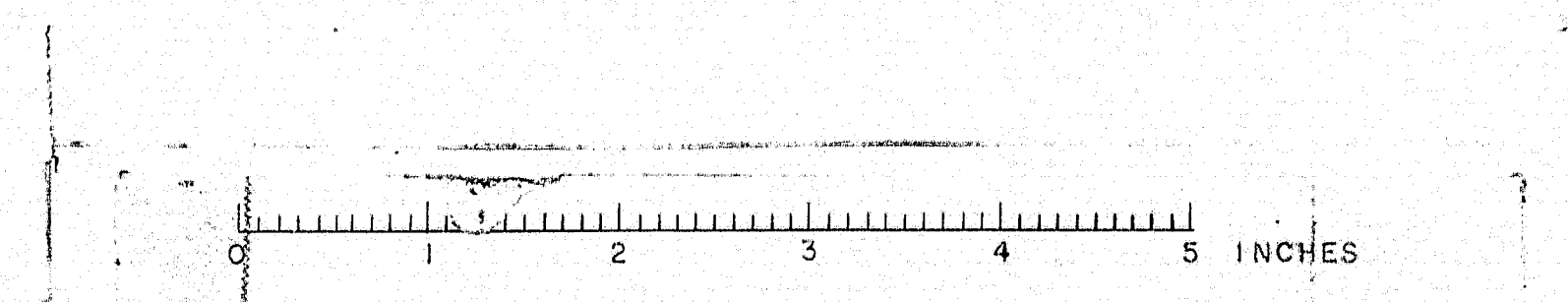
Note: Traffic will be maintained over the existing structure during the period of construction. A minimum clear roadway width of 14'-0" shall be provided.

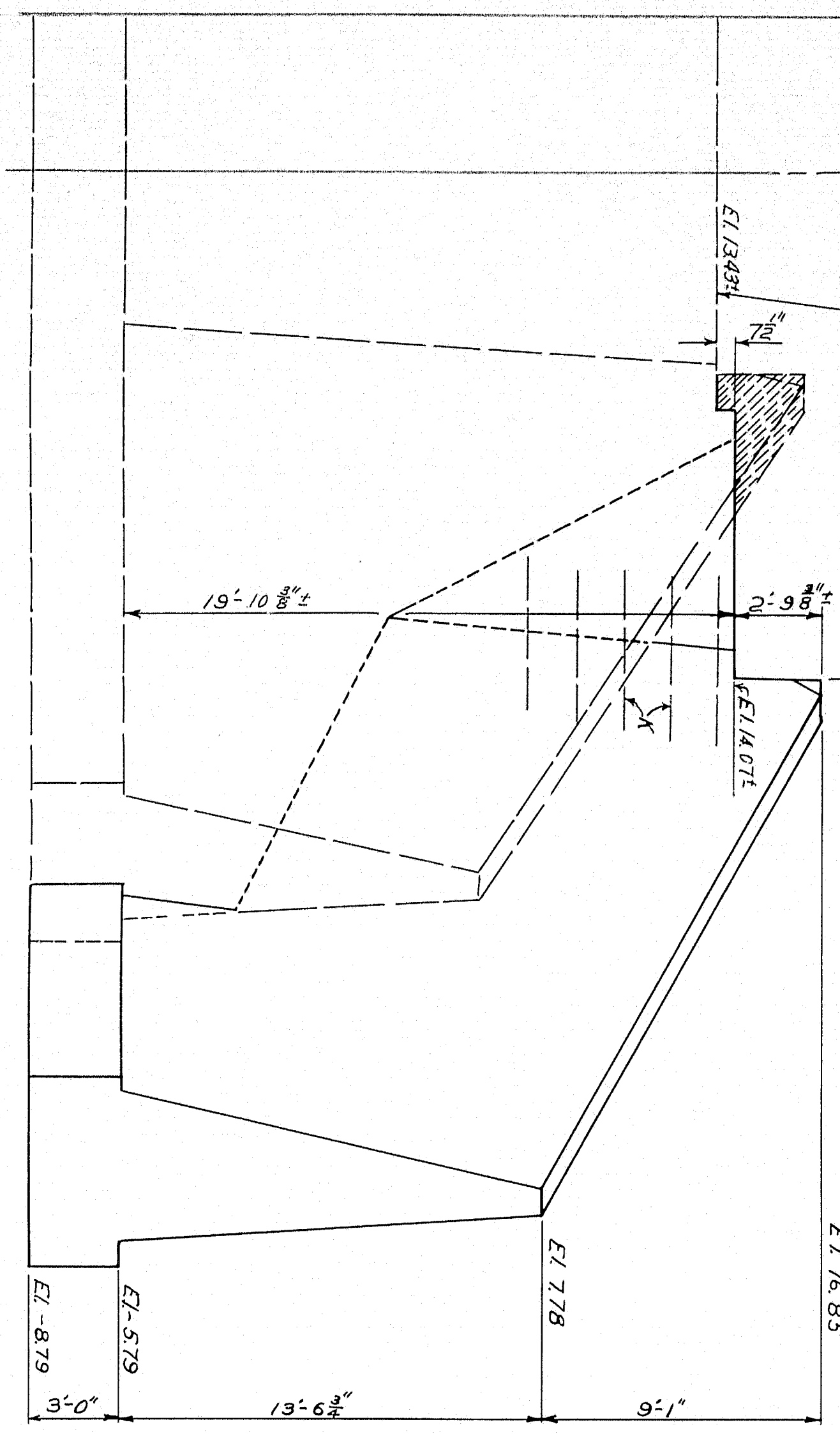
PROFILE
Scales - Hor. 1" = 20' Vert. 1" = 5'

SURVEY	BLAKE	BRIDGE
PLAN	BLAKE	

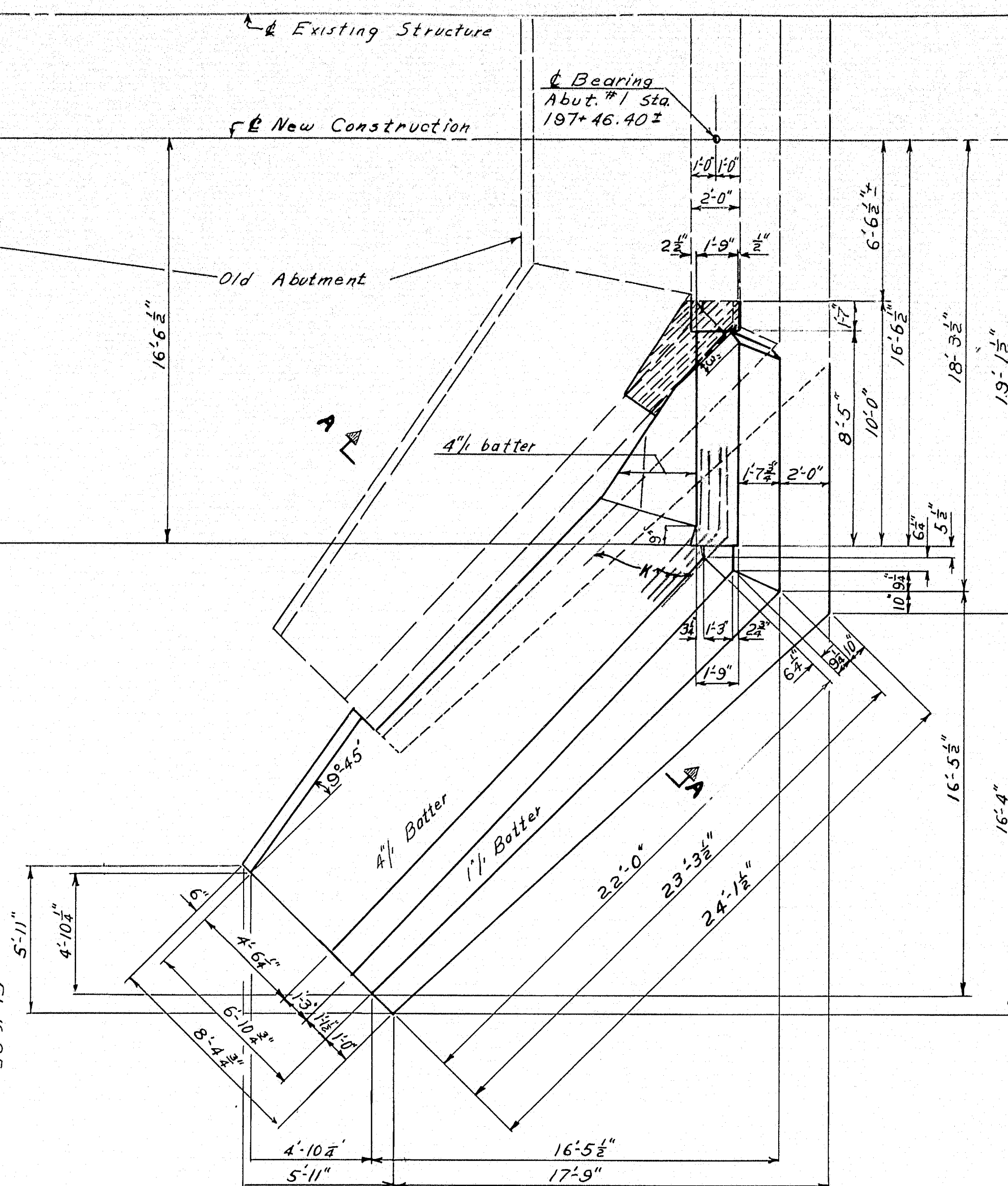
STATE HIGHWAY COMMISSION
BRIDGE DIVISION
TOGUS BRIDGE
OVER
TOGUS STREAM
BETWEEN THE TOWNS OF
RANDOLPH AND PITTSBORO
KENNEBEC COUNTY
SHEET 1 OF 3 AUGUSTA, ME. MARCH, 1949

M. 309

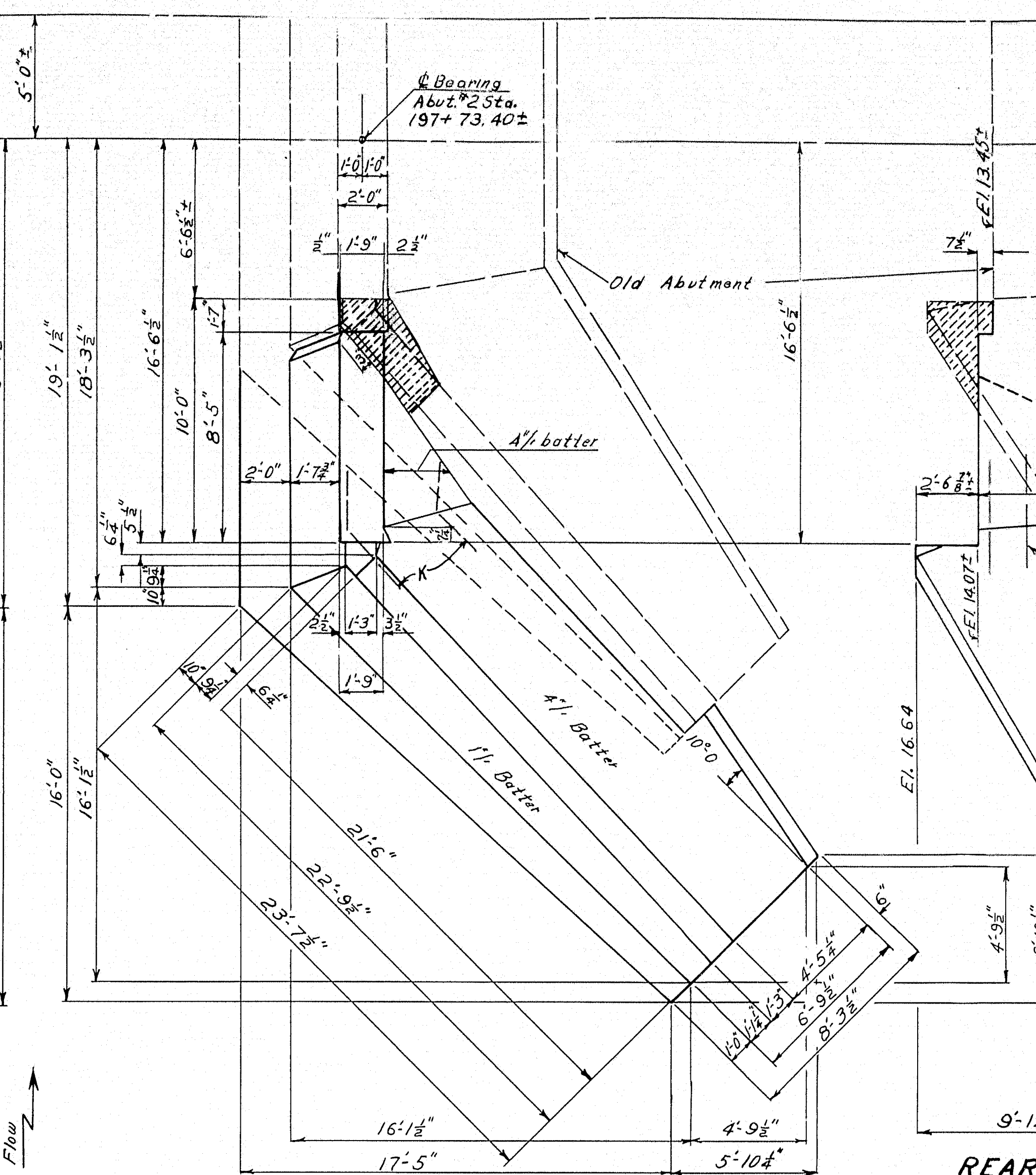




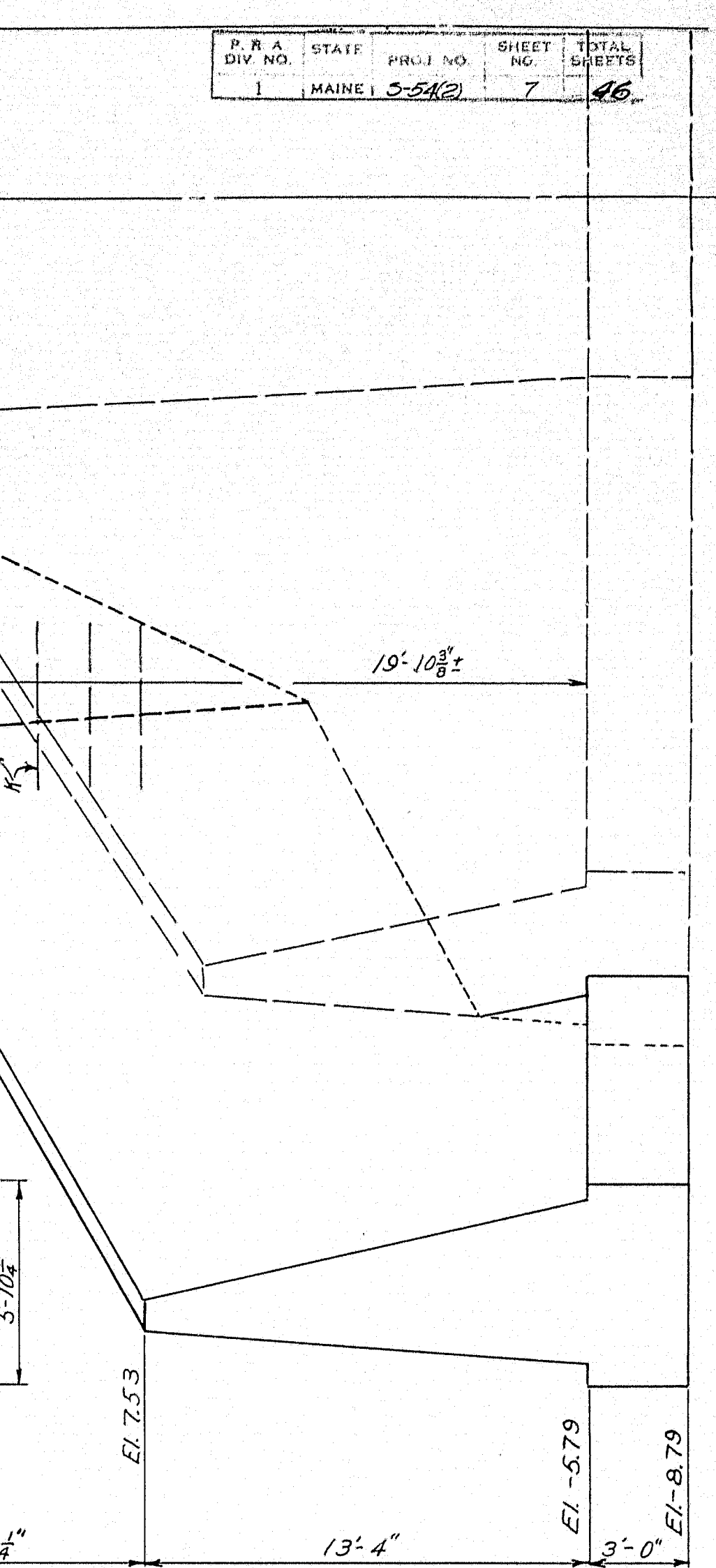
REAR ELEVATION ABUT. NO. 1



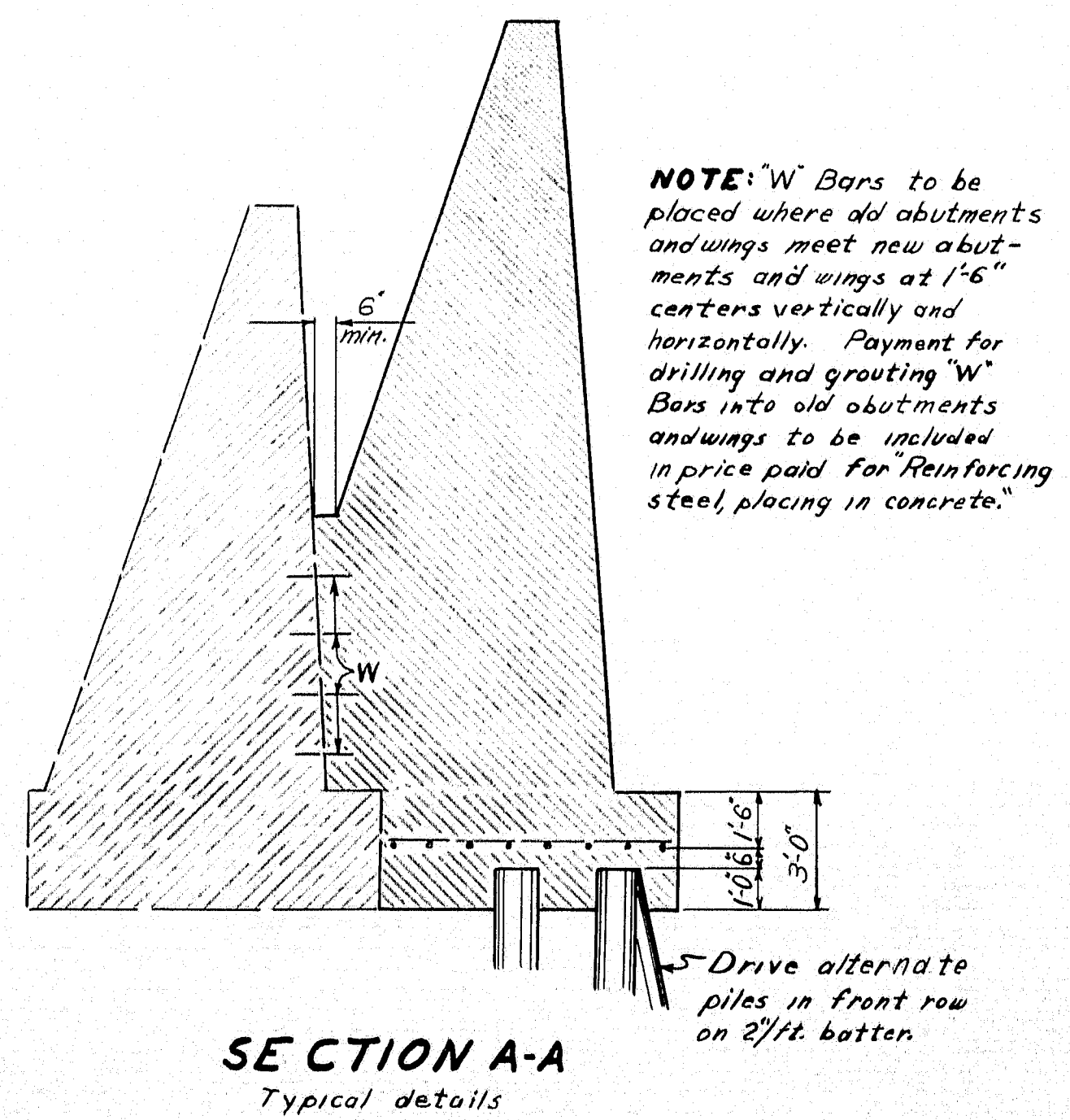
PLAN ABUT. NO. 1



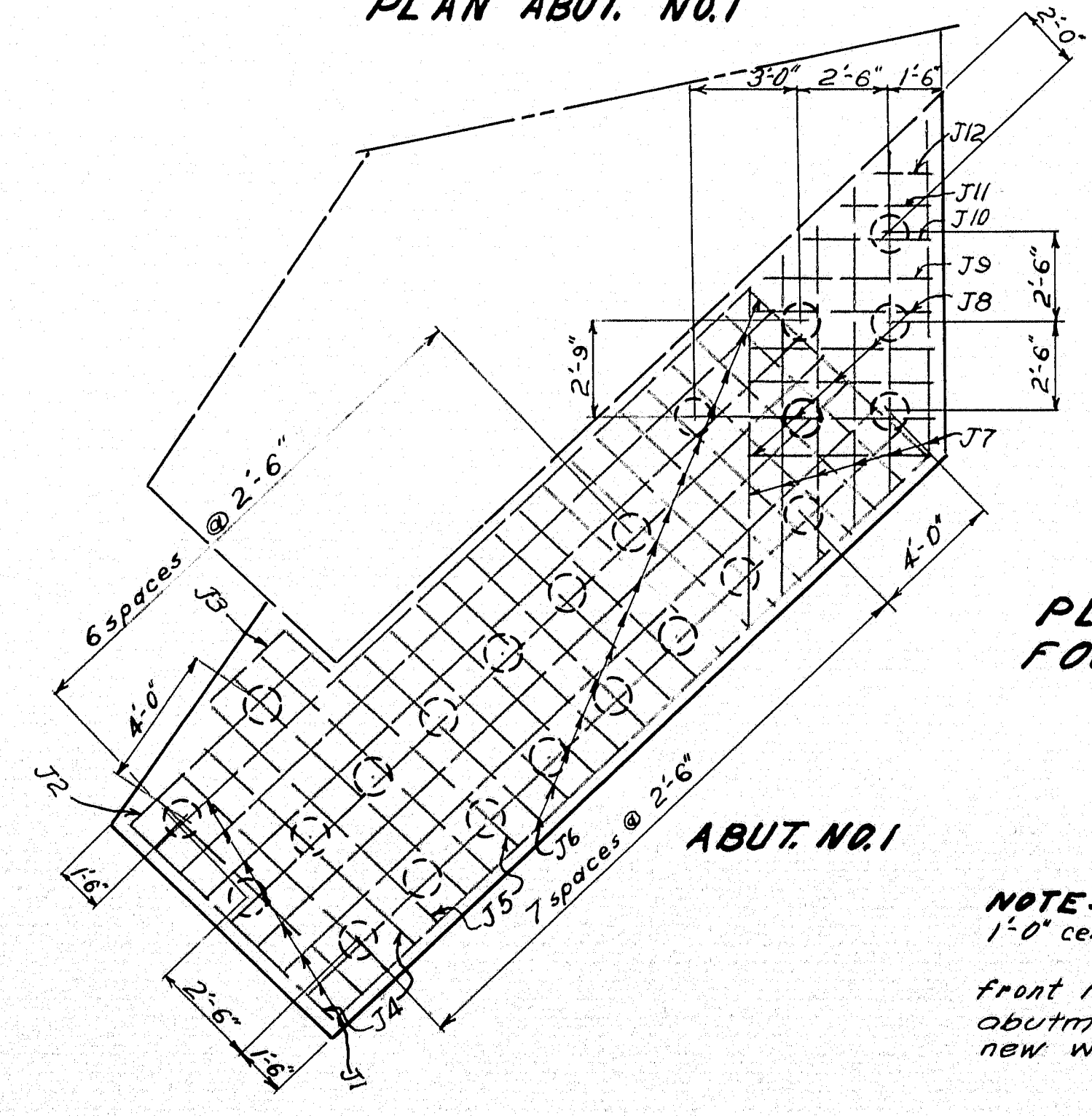
PLAN ABUT. NO. 2



REAR ELEVATION ABUT. NO. 2

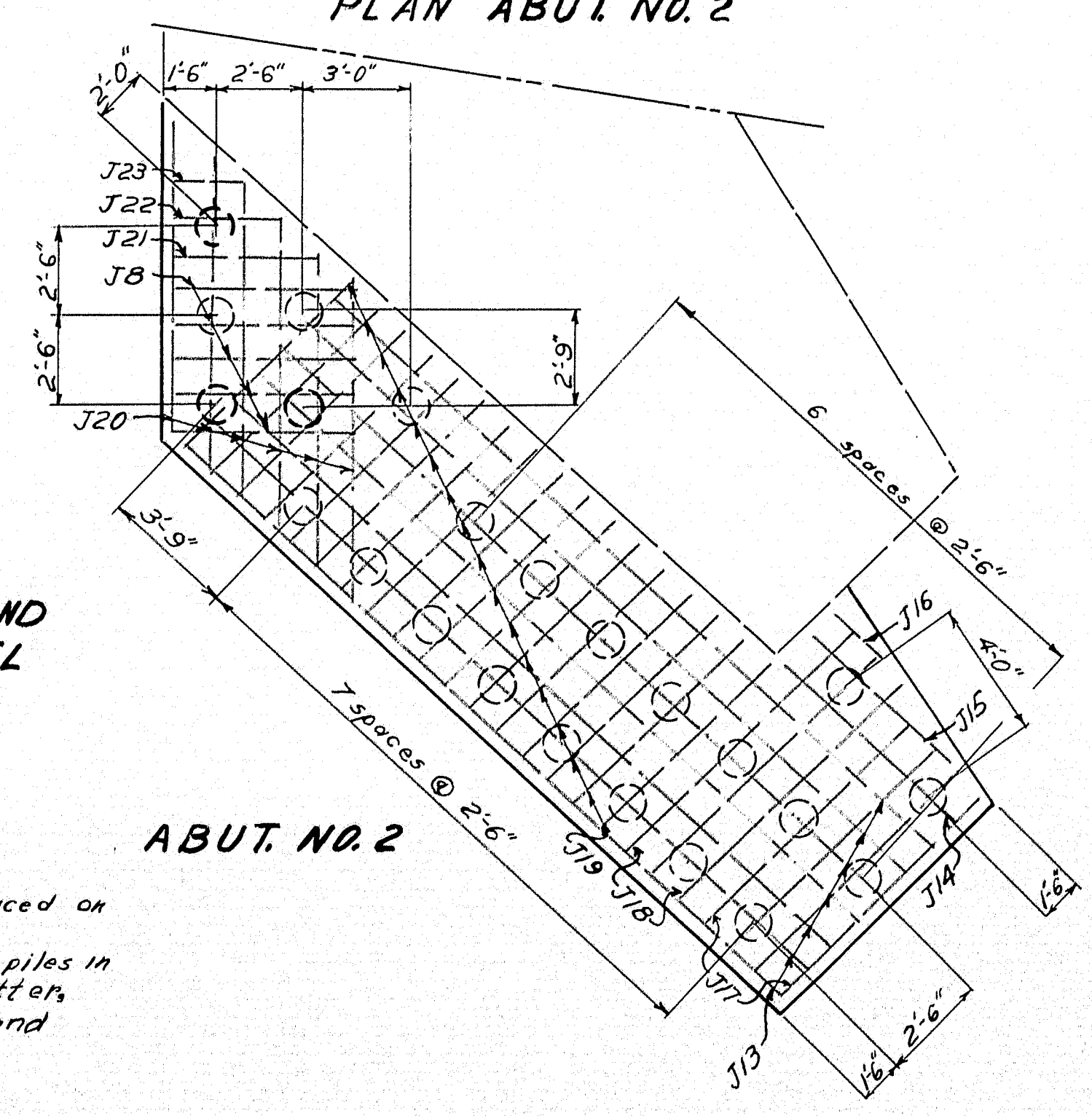


SECTION A-A
Typical details



PLAN PILES AND
FOOTING STEEL

NOTE: All "J" Bars spaced at 1'-0" centers.
Drive alternate piles in front row on 2 1/2 ft. batter, abutment extensions and new wing walls.



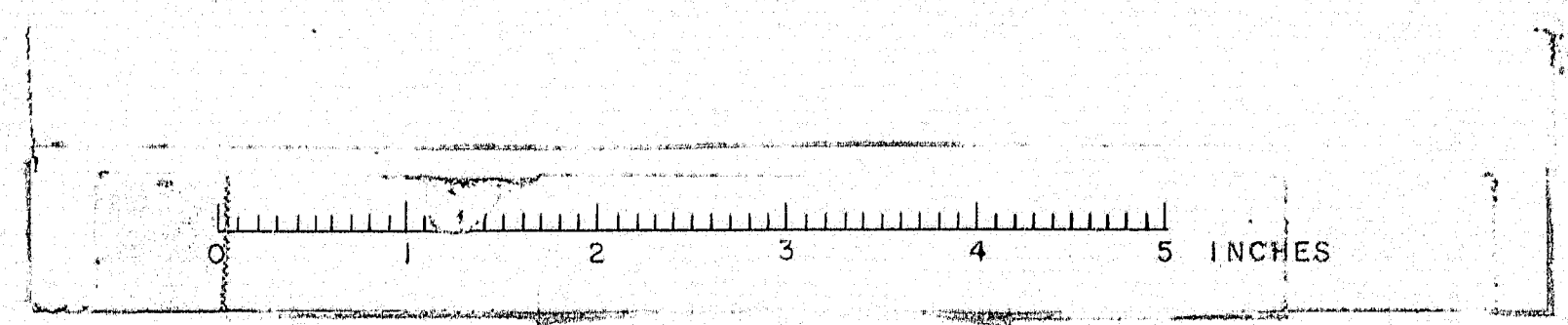
ABUT. NO. 2

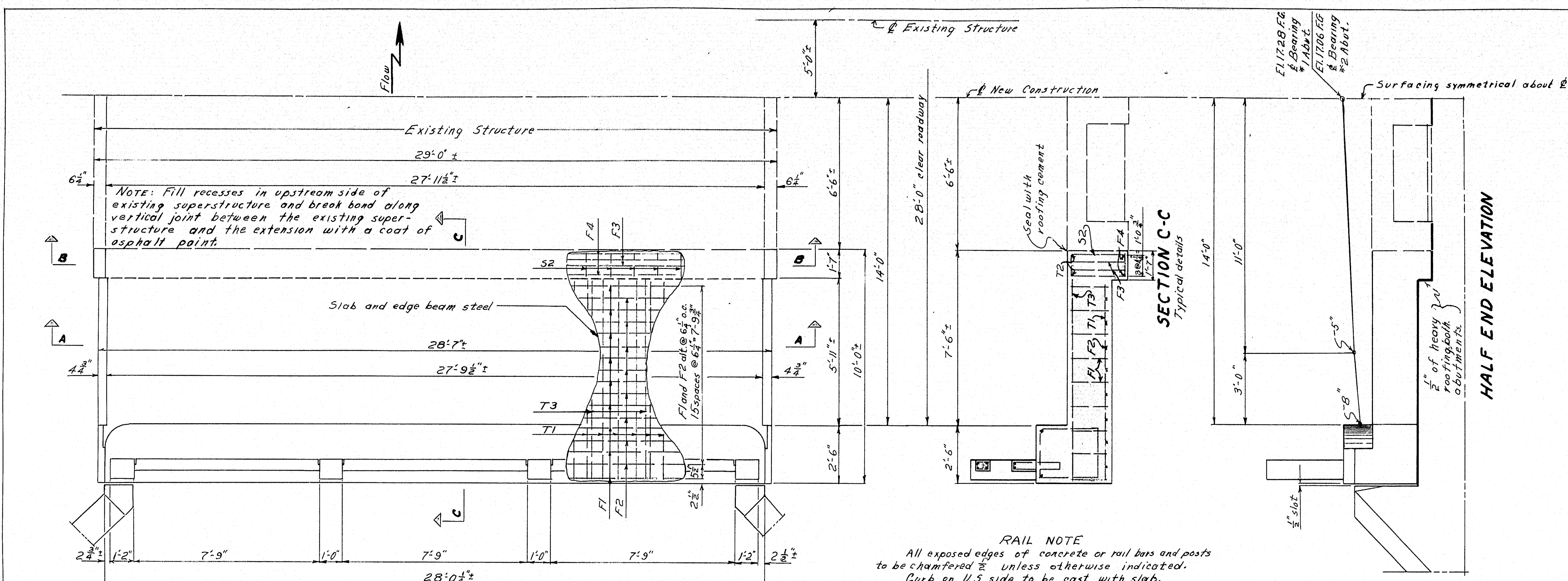
NOTE: Place K Bars at junction of wings and breastwalls 6" from back forms spaced at 1'-6" centers vertically; also at 4" centers horizontally 6" below the bridge seat. K Bars to be bent in field to fit forms.
Piles-46 required. About 35' long, minimum bearing load per pile-20 tons.
Remove shaded portions of old wings down to exact elevations shown and finish smooth, or remove shaded portions to a minimum of one (1) foot below elevations shown and replace concrete to exact elevations shown with no additional payment.
See note on sheet 3 for covering 1/2" slots between the superstructure and wing walls.

Class B concrete - Substructure extension

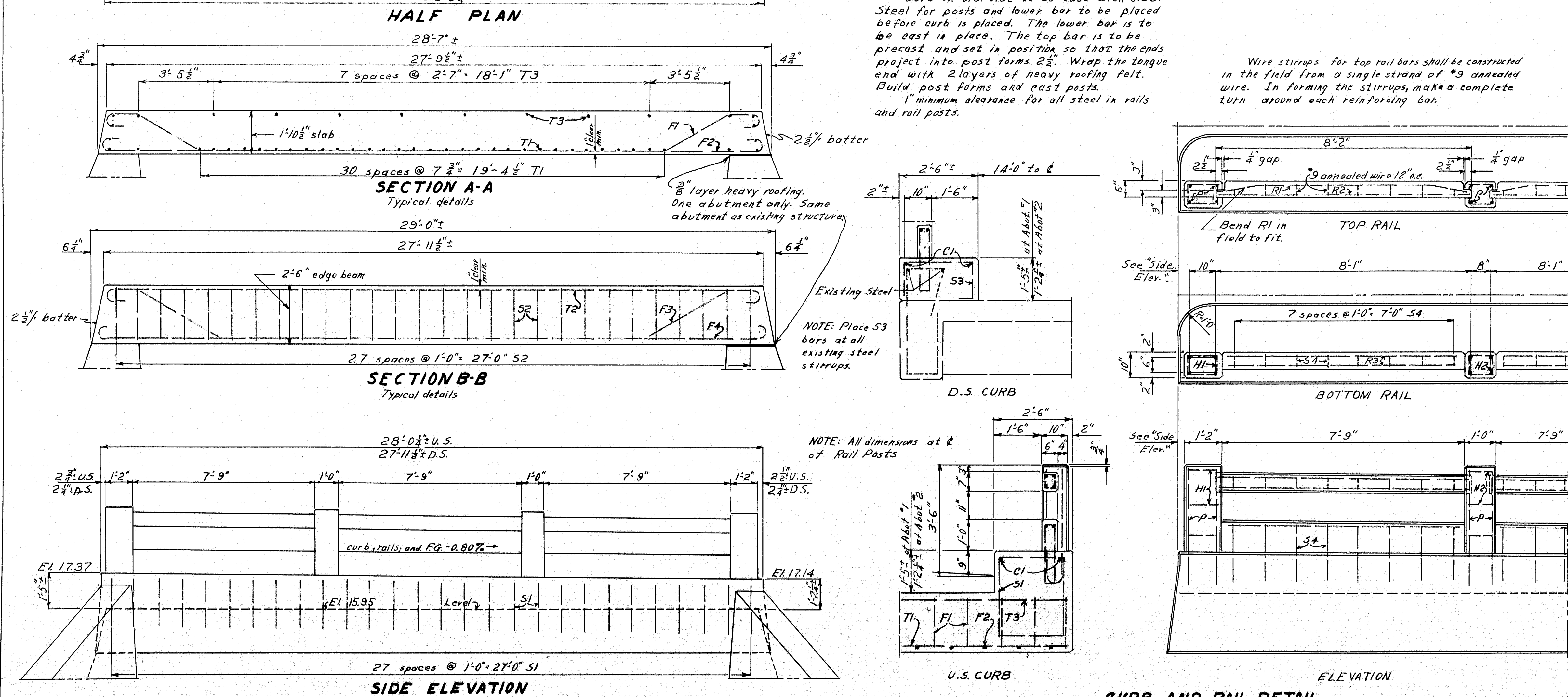
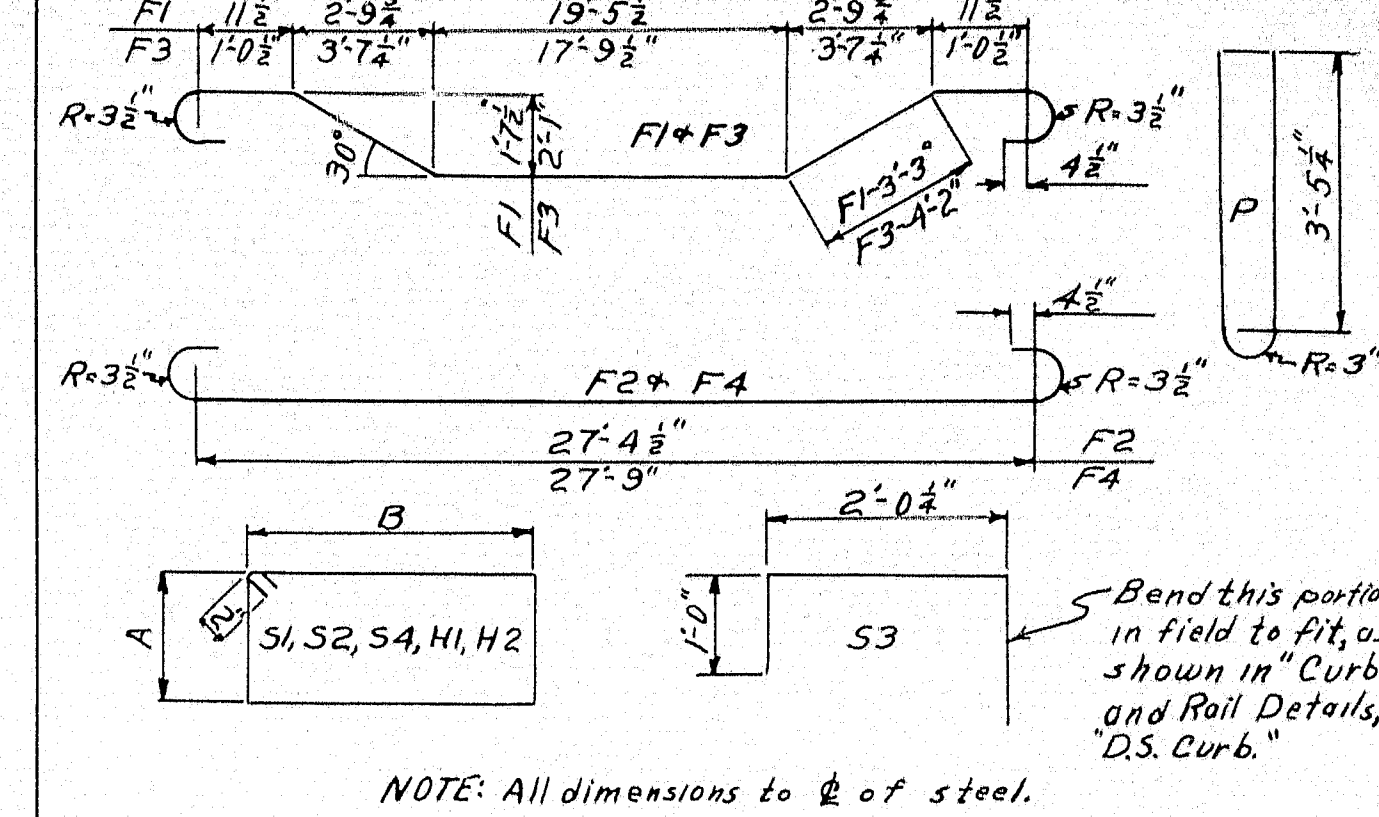
DESIGN - RISSEL	BRIDGE-2862
TRACE - RISSEL	
CHECK - Hamilton	
STATE HIGHWAY COMMISSION BRIDGE DIVISION	
TOGUS BRIDGE OVER TOGUS STREAM BETWEEN THE TOWNS OF RANDOLPH AND PITTSBORO KENNEBEC COUNTY SUBSTRUCTURE	
SHEET 2 OF 3 AUGUSTA, MAINE SEPT. 1949	

M 310





REINFORCING STEEL SCHEDULE



BRIDGE-2862

STATE HIGHWAY COMMISSION
BRIDGE DIVISION

TOGUS BRIDGE
OVER
TOGUS STREAM

BETWEEN THE TOWNS OF
RANDOLPH AND PITTSTON
KENNEBEC COUNTY
SUPERSTRUCTURE

SHEET 3 OF 3 AUGUSTA, MAINE SEPT., 1949

M 311

